

PARK TOWER

OFFICE SPACE FOR LEASE

MNC Center, Jalan Kebon Sirih 17-19, Jakarta Pusat 10340



BUILDING SPACE

Total Office Area (semi gross)	: 29,805 sqm
Total Number of Floors	: 13 levels of office floors : 11 levels of Park Hyatt hotel (6 star) : 8 levels of function rooms, gym, spa, restaurants, pool : 5 levels of basement
Office Floor Plate (semi gross)	: ± 2,200.00 sqm (subject to final measurement)
Parking Space (Integrated)	: Car - 1,260 lots Motor - 2,000 lots

Structural Information

Floor to Ceiling Height	: Typical office : 2.8 meter
Floor Loading Capacity	: Typical office 250 kg/sqm
Lifts	: Passenger/Office : 7 units ; GF - 19 ; 1,600 kg ; 24 person : Service : 1 unit ; BS - 20 ; 1,600 kg ; 24 person : Parking : 1 mps ; 1 unit ; BS - GF ; 1,000 kg ; 15 person : VIP : 1 unit ; BS - 20 ; 1,600 kg ; 24 person

Mechanical & Electrical

Air Conditioning System	: Centralized chilled water at typical office & main lobby
Power Supply for Electricity	: 65 VA/sqm
IT & Telecommunication	: Fixed line telephone system - upon request ; data & telephone facility provided
Genset	: 100% emergency back up (3 x 2,500 KVA)

SECURITY & SAFETY MEASURES

General Security

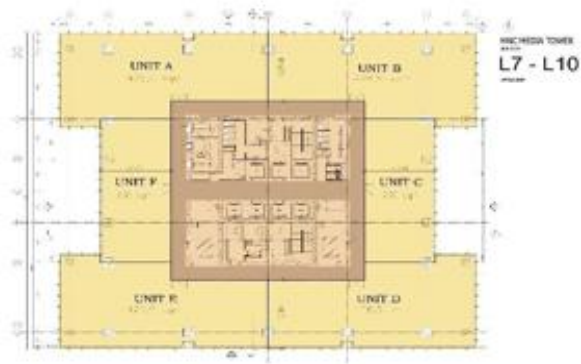
Security System	: 24 hours CCTV and integrated system for security
CCTV	: Installed on every floors in common area, GF/ Lobby and basements
Fire Safety System	: Automation fire alarm and sprinkler system, fire hydrant, fire rated doors, smoke and heat detector

BUILDING OPERATIONAL HOURS

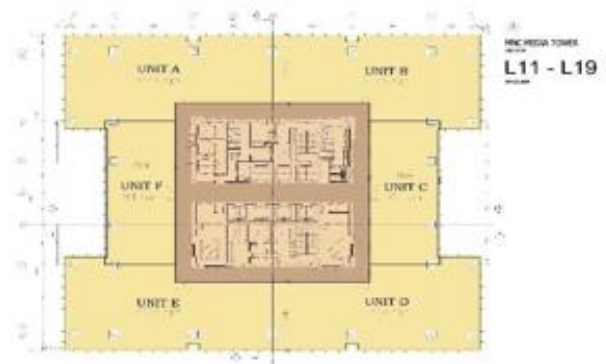
Monday - Friday	: 07.00 - 18.00
Saturday / Sunday / Public Holiday	: OFF

FLOOR PLAN

7th-10th Floor



11th-19th Floor



LEGEND :



MARKETING CONTACTS

For further information contact

: **OFFICE LEASE MARKETING**

+62 812 7090 7900

+62 21 3983 6536